

## Swivel Castors with High Speed Elastic rubber wheels

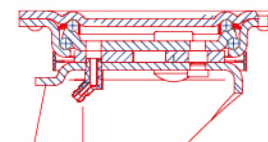
Wheel Type SAD

### Housing:

Fork made of pressed steel, Zinc-plated,  
Swivel head with double ball race and sealing,  
Double rivet

### Wheel:

High Speed Rubber tyre Mold on Casting  
Aluminium wheel hub, Double ball bearings



Swivel Castor

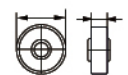

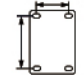
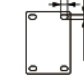













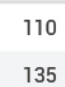
Swivel Castor with Tail Lock



Swivel Castor with Total lock

# 06 Series

Swivel Castor	Swivel Castor with Tail Lock								 Load Capacity 20km/H
WAPS8038SADX	-	80x38	105x80	80x60	11x9	40	120	110	
WAPS10040SADX	-	100x40	105x80	80x60	11x9	40	130	135	
WAPS12550SADX	-	125x50	135x110	105x80	13.5x11	50	178	185	
WAPS15050SADX	-	150x50	135x110	105x80	13.5x11	53	210	230	
WAPS16050SADX	WAPT16050SADX	160x50	135x110	105x80	13.5x11	53	215	250	
WAPS20050SADX	WAPT20050SADX	200x50	135x110	105x80	13.5x11	55	245	350	
WAPS25050SADX	WAPT25050SADX	250x60	135x110	105x80	13.5x11	67	297	430	

Swivel Castor with Total lock									 Load Capacity 20km/H
WAPB8038SADX	-	80x38	105x80	80x60	11x9	40	120	110	
WAPB10040SADX	-	100x38	105x80	80x60	11x9	40	130	135	
WAPB12550SADX	-	125x50	135x110	105x80	13.5x11	50	178	185	
WAPB15050SADX	-	150x50	135x110	105x80	13.5x11	53	210	230	
WAPB16050SADX	-	160x50	135x110	105x80	13.5x11	53	215	250	
WAPB20050SADX	-	200x50	135x110	105x80	13.5x11	55	245	350	

# Swivel Castors with High Speed Elastic rubber wheels

Wheel Type SBD

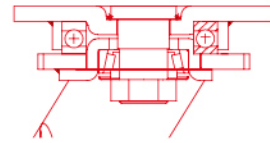


## Housing:

Fork made of pressed steel, Zinc-plated,  
Swivel head with Tapered roller bearing and axial ball bearing

## Wheel:

High Speed Elastic Rubber tyre Mold on Weld  
Pressed steel wheel hub, Double ball bearings



Swivel Castor



Swivel Castor with Tail Lock

Swivel Castor	Swivel Castor with Tail Lock								
WBPS16050EDDX	WBPT16050EDDX	160x50	135x110	105x80	13.5x11	57	205	300	KG Load Capacity 20km/H
WBPS20050EDDX	WBPT20050EDDX	200x50	135x110	105x80	13.5x11	65	245	350	
WBPS25080EDDX	WBPT25080EDDX	250x80	135x110	105x80	13.5x11	80	305	500	

# Swivel and Fixed Castors with Conductive Thermoplastic Rubber wheels

Wheel Type CDB

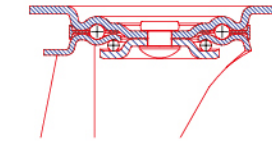


## Housing:

Fork made of pressed steel, Zinc-plated,  
Swivel head with double ball race and sealing

## Wheel:

Conductive Thermoplastic Rubber thread mold on Polypropylene wheel hub, central ball bearing



Swivel Castor



Fixed Castor



Swivel Castor with Total Lock

Swivel Castor								
KAPS7530CDBB	75x30	77x67	55.7x46.5	16x8.5	30.5	103	75	KG Load Capacity 4km/H
KAPS10032CDBB	100x32	77x67	55.7x46.5	16x8.5	40	137	100	
KAPS12532CDBB	125x32	77x67	55.7x46.5	16x8.5	43	162	100	
Fixed Castor								
KAPF7530CDBB	75x30	77x67	55.7x46.5	16x8.5	-	103	75	
KAPF10032CDBB	100x32	77x67	55.7x46.5	16x8.5	-	137	100	
KAPF12532CDBB	125x32	77x67	55.7x46.5	16x8.5	-	162	100	
Swivel Castor with Total Lock								
KAPB7530CDBB	75x30	77x67	55.7x46.5	16x8.5	30.5	103	75	
KAPB10032CDBB	100x32	77x67	55.7x46.5	16x8.5	40	137	100	
KAPB12532CDBB	125x32	77x67	55.7x46.5	16x8.5	43	162	100	

## Options:



CDP series wheels

# Swivel Castors with Conductive Thermoplastic Rubber wheels

Wheel Type CDB

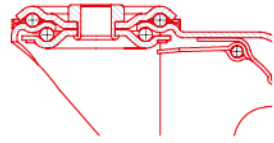


## Housing:

Fork made of pressed steel, Zinc-plated, Swivel head with double ball race and sealing

## Wheel:

Conductive Thermoplastic Rubber thread mold on Polypropylene wheel centre with central Ball bearing



Swivel Castor with Total Lock



Swivel Castor

Swivel Castor with Total Lock	-						KG Load Capacity 4km/H
KAHS7530CDBB	-	75x30	30.5	φ13	100.5	75	
KAHS10032CDBB	-	100x32	40	φ13	134.5	100	
KAHS12532CDBB	-	125x32	43	φ13	159.5	100	
<b>Swivel Castor</b>							
KAHB7530CDBB	-	75x30	30.5	φ13	100.5	75	
KAHB10032CDBB	-	100x32	40	φ13	134.5	100	
KAHB12532CDBB	-	125x32	43	φ13	159.5	100	

## Options:



CDP series wheels

# Swivel and Fixed Castors with Conductive solid Rubber wheels

Wheel Type CAR

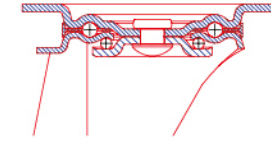


## Housing:

Fork made of pressed steel, Zinc-plated, Swivel head with double ball race and sealing

## Wheel:

Conductive Solid Rubber tyre with Pressed steel wheel central, Roller bearing



Swivel Castor



Fixed Castor



Swivel Castor with Total Lock

Swivel Castor	Fixed Castor									KG Load Capacity 4km/H
LAPS8030CARX	LAPF8030CARX	80x30	105x80	80x60	11x9	36	100	50		
LAPS10030CARX	LAPF10030CARX	100x30	105x80	80x60	11x9	36	125	70		
LAPS12537.5CARX	LAPF12537.5CARX	125x37.5	105x80	80x60	11x9	40	155	100		
LAPS16040CARX	LAFS16040CARX	160x40	135x110	105x80	13.5x11	52	190	135		
LAPS20050CARX	LAFS20050CARX	200x50	135x110	105x80	13.5x11	54	235	205		
<b>Swivel Castor with Total Lock</b>										
LAPB8030CARX	-	80x30	105x80	80x60	11x9	36	100	50		
LAPB10030CARX	-	100x30	105x80	80x60	11x9	40	125	70		
LAPB12537.5CARX	-	125x37.5	105x80	80x60	11x9	40	155	100		
LAPB16040CARX	-	160x40	135x110	105x80	13.5x11	60	190	135		
LAPB20050CARX	-	200x50	135x110	105x80	13.5x11	60	235	205		

# Swivel and Fixed Castors with High Temperature Polyamide wheels

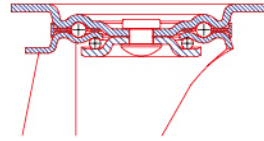
Wheel Type HBP

## Housing:

Fork made of pressed steel, Zinc-plated,  
Swivel head with double ball race and sealing

## Wheel:

Wheels for High Temperature Polyamide,  
Plain bore



Temperature range: -20~+280°C



Fixed Castor

Swivel Castor



Swivel Castor with Total lock



# Swivel and Fixed Castors with High Temperature Rubber wheels

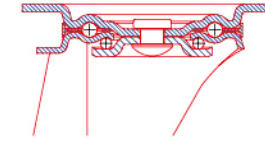
Wheel Type HAP

## Housing:

Fork made of pressed steel, Zinc-plated, Swivel head with double ball race and sealing

## Wheel:

High Temperature Elastic rubber tyre mold on Polyamide wheel hub, Plain bore



Temperature range: -20~+250°C



Fixed Castor

Swivel Castor



Swivel Castor with Total lock



Swivel Castor	Fixed Castor									KG Load Capacity 4km/H
LAPS8034HBPX	LAPF8034HBPX	80x34	105x80	80x60	11x9	36	100	150		
LAPS10036HBPX	LAPF10036HBPX	100x36	105x80	80x60	11x9	36	125	200		
LAPS12540HBPX	LAPF12540HBPX	125x40	105x80	80x60	11x9	40	155	250		
LAPS15040HBPX	LAPF15040HBPX	150x40	135x110	105x80	13.5x11	52	185	350		
LAPS16040HBPX	LAPF16040HBPX	160x40	135x110	105x80	13.5x11	52	190	350		
LAPS20046HBPX	LAPF20046HBPX	200x46	135x110	105x80	13.5x11	54	235	350		
<b>Swivel Castor with Total lock</b>										
LAPB8034HBPX	-	80x34	105x80	80x60	11x9	36	100	150		
LAPB10036HBPX	-	100x36	105x80	80x60	11x9	40	125	200		
LAPB12540HBPX	-	125x40	105x80	80x60	11x9	40	155	250		
LAPB15040HBPX	-	150x40	135x110	105x80	13.5x11	60	185	350		
LAPB16040HBPX	-	160x40	135x110	105x80	13.5x11	60	190	350		
LAPB20046HBPX	-	200x46	135x110	105x80	13.5x11	60	235	350		

Swivel Castor	Fixed Castor									KG Load Capacity 4km/H
LAPS8035HAPX	LAPF8035HAPX	80x35	105x80	80x60	11x9	36	100	80		
LAPS10036HAPX	LAPF10036HAPX	100x36	105x80	80x60	11x9	36	125	80		
<b>Swivel Castor with Total lock</b>										
LAPB8035HAPX	-	80x35	105x80	80x60	11x9	36	100	80		
LAPB10036HAPX	-	100x36	105x80	80x60	11x9	40	125	80		

# Swivel and Fixed Castors with Oil Resistance solid Rubber wheels

Wheel Type OAR



### Housing:

Fork made of pressed steel, Zinc-plated,  
Swivel head with double ball race and sealing

### Wheel:

Oil Resistance Solid Rubber tyre with Pressed steel wheel central, Roller bearing



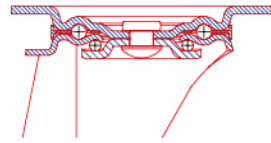
Swivel Castor



Fixed Castor



Swivel Castor with Total Lock



Swivel Castor	Fixed Castor									
LAPS800AR	LAPF800AR	80x30	105x80	80x60	11x9	36	100	50		
LAPS1000AR	LAPF1000AR	100x30	105x80	80x60	11x9	36	125	70		
LAPS1250AR	LAPF1250AR	125x37.5	105x80	80x60	11x9	40	155	100		
LAPS1600AR	LAPF1600AR	160x40	135x110	105x80	13.5x11	52	190	135		
LAPS2000AR	LAPF2000AR	200x50	135x110	105x80	13.5x11	54	235	205		

### Swivel Castor with Total Lock

LAPB800AR	-	80x30	105x80	80x60	11x9	36	100	50		
LAPB1000AR	-	100x30	105x80	80x60	11x9	40	125	70		
LAPB1250AR	-	125x37.5	105x80	80x60	11x9	40	155	100		
LAPB1600AR	-	160x40	135x110	105x80	13.5x11	60	190	135		
LAPB2000AR	-	200x50	135x110	105x80	13.5x11	60	235	205		

# 07 Series